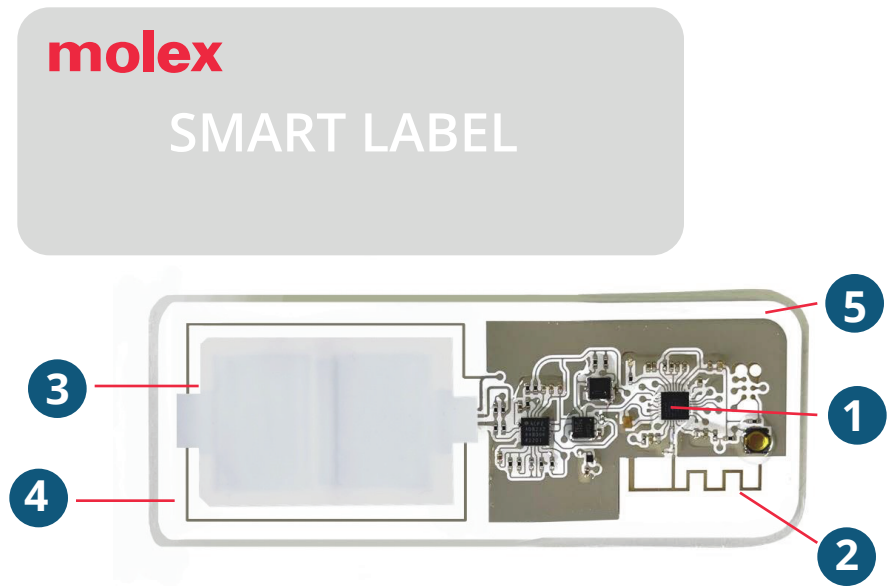


MOLEX MANUFACTURES COST-EFFECTIVE SMART LABEL TECHNOLOGY WITH SUPERIOR FLEXIBLE ELECTRONIC AND MECHANICAL INTEGRATION.

Our smart label technology integrates a variety of components and sensors into one compact, easy-to-use, wireless device.

1. BLE connectivity
2. Antenna
3. Thin-flex battery for one-time use
4. Flexible substrate
5. Adhesive layer and release liner



PRINTED CIRCUIT SOLUTIONS

ENHANCED FORM, FIT AND FUNCTION

INNOVATIVE SOLUTIONS FOR DEMANDING APPLICATIONS

EXPERT DESIGN AND ENGINEERING

OUR CUSTOMER ENGAGEMENT MODEL PROVIDING RELIABLE DESIGN AND ENGINEERING EXPERTISE



END-TO-END PRODUCT DESIGN
Close collaboration with our customers



GLOBAL SUPPORT
Design and manufacturing in Europe, Asia and North America



TRUSTED PROVIDER
Dedicated, cross-functional team with customer-first approach



PROVEN HISTORY
More than 80 years of innovation

APPLICATIONS



COLD CHAIN

ASSET TRACKING

AUTHENTICATION CONTROL

SUPPLY CHAIN TRANSPARENCY

FOOD SHIPMENTS AND TRACKING

PHARMA ASSET TRACKING

WE OFFER A WIDE RANGE OF SOLUTIONS FOR SMART LABELS TAILORED TO YOUR SPECIFIC NEEDS.

Our team can help customize:

- Tag layout
- Chip selection
- Wireless design
- Component integration
- Product design specifications
- Tag graphics
- Tag manufacturing, program, test

