

SMP Subminiature Connectors

molex

The SMP subminiature connectors offer superior performance from DC to 40 GHz. PCB mount, cable mount and in-series adaptors provide an interconnect solution for board-to-board, blind mate and rack-and-panel applications while maintaining package density. The connectors feature push-on or snap coupling. An audible and positive tactile click ensures complete electrical connection.



Features and Advantages

DC to 40 GHz

Subminiature

Push-on or snap coupling

Compact size

Up to 0.25mm radial mis-alignment

Up to 0.25mm axial mis-alignment

Cable mount versions for both flexible and semi-rigid cable

Materials

Contacts – BeCu gold plated (adaptors, PCB & cable mount connectors); brass gold plated (PCB)

Insulator – Teflon, peak or LCP

Body – BeCu gold plated (adaptors); brass gold plated (PCB & cable mount connectors)

Technical Product Information

PCB Plugs – Vertical SMT, through-hole mount or edge mount

Cable Jacks – Straight and right-angle versions

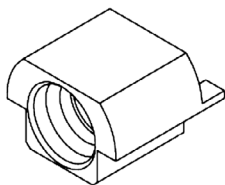
– Semi-rigid cables .086, .047, UT.047TP & UT-85TP

– Flexible cables – RG316, .047, .086

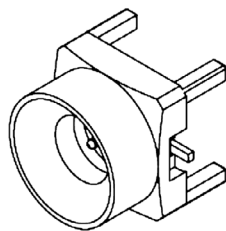
Non-magnetic versions available for medical applications

Jack-to-Jack adaptors – Various lengths available 7mm through 28mm

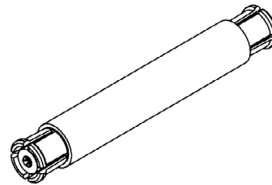
(Custom lengths by request)



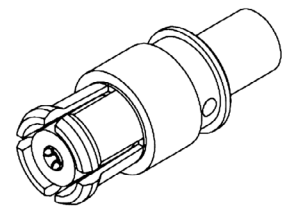
Edge Mount



Plugs



Jack-to-Jack Adaptors



Cable Jacks

Specifications

ELECTRICAL

Nominal Impedance (Ohms): 50
 Frequency Range (GHz): DC-40
 Voltage, Working (Vrms): 335
 Insulation Resistance (MOhms): 5000
 Center Contact Resistance (MOhms): ≤ 6
 Outer Contact Resistance (MOhms): ≤ 2
 RF Leakage (-dB): 65
 RF Insertion Loss (dB): ≤ 1 at 1GHz
 VSWR at Max. Freq: 1.50 typical

MECHANICAL

Coupling Method: Push-On

Force to Engage (Max.):

Full Detent: 15 lbs (66.75N)
 Limited Detent: 10 lbs (44.5N)
 Smooth Bore: 2 lbs (8.9N)

Force to Disengage (Min.):

Full Detent: 5 lbs (22.25N)
 Limited Detent: 2 lbs (8.9N)
 Smooth Bore: 0.5 lbs (2.225N)

Durability (Cycles):

Full Detent: 100
 Limited Detent: 500
 Smooth Bore: 1000

ENVIRONMENTAL

Temperature (Degrees C): -65 to +165
 Vibration: MIL-STD-202, Method 204: Test Condition B
 Thermal Shock: MIL-STD-202, Method 107:
 Test Condition C
 Corrosion (Salt Spray): MIL-STD-202, Method 101:
 Test Condition B
 Mechanical Shock: MIL-STD-202, Method 213:
 Test Condition B
 Moisture Resistance: MIL-STD-202, Method 106:
 Five minutes after removal 200 MOhms

Ordering Information

Part Number	Description	Body	Plating	Cable Type
73415-3310	Vertical Plug PCB With Detent	Brass	Gold	N/A
73415-3320	Vertical Plug PCB Without Detent	Brass	Gold	N/A
73415-3350	Jack-to-Jack adaptor (Length 23.50mm)	Beryllium Copper	Gold	N/A
73415-3351	Jack-to-Jack adaptor (Length 20.30)	Beryllium Copper	Gold	N/A
73415-3020	Jack-to-Jack adaptor (Length 7.00)	Beryllium Copper	Gold	N/A
73415-3030	Right-Angle Solder Jack	Beryllium Copper	Gold	.086 SR
73415-3580	Right-Angle Solder Jack	Beryllium Copper	Gold	.047 SR
73415-3720	Right-Angle Solder Jack	Beryllium Copper	Gold	UT-47-TP
73415-5030	Right-Angle Crimp Jack	Beryllium Copper	Gold	RG 316
73415-3740	Vertical Solder Jack	Beryllium Copper	Gold	UT-85-TP
73415-3591	Edge-Mount Plug Limited Detent	Brass	Gold	N/A
85305-0232	Vertical SMT Plug Limited Detent	Brass	Gold	N/A
73415-5010	Vertical SMT Plug Limited Detent	Brass	Gold	N/A

www.molex.com/link/rfmicrowavecoax.html