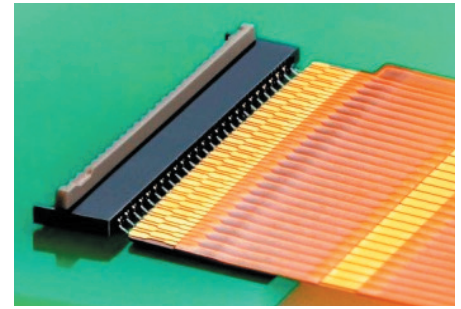


LA75 Series 0.30mm Pitch FPC Connector

molex[®]

Ideal for tight-packaging applications, the ultra-compact LA75 FPC connectors offer simplified cable assembly and retention and a high-temperature option to meet the needs of mobile and electronics makers

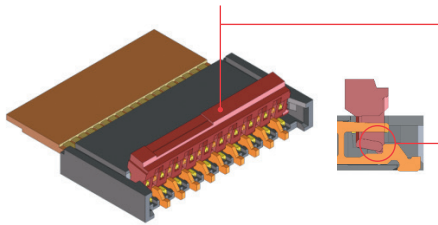


LA75 FPC Connector

Product Features and Advantages

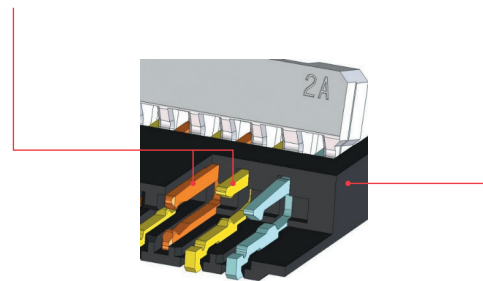
Actuator Hold Feature

The actuator design keeps it in the open position during shipping and assembly. This improves assembly efficiency as operators do not need to open or hold it when inserting the cable



Dual Contact Terminal Design

Enables cable to be inserted from the top or bottom direction for design and application flexibility

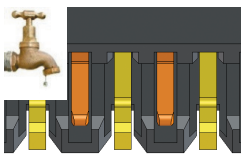


High Temperature Material

Material option that can withstand temperatures up to 125°C to meet automotive requirements

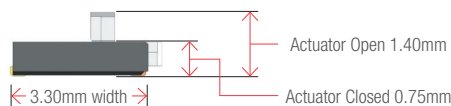
Solder Wicking Prevention

A clearance of 0.07mm between housing and terminal prevents solder ingress or wicking



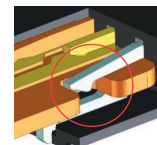
Compact Size

Space savings are provided in the X, Y and Z axes



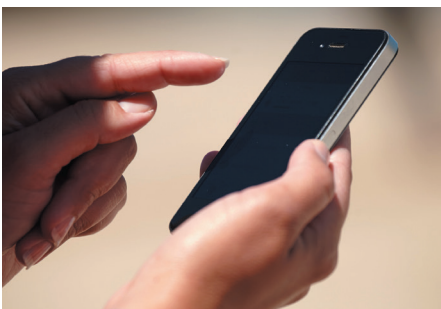
Cable Lock Feature

Terminal cable lock feature is used with notched cable for additional cable retention



Applications

Mobile Devices



Smartphone

Medical Equipment



Portable Medical Devices

LA75 Series 0.30mm Pitch FPC Connector



Specification

REFERENCE INFORMATION

Packaging: Embossed tape
Designed In: Millimeters
RoHS: Yes
Halogen Free: Yes

MECHANICAL

Durability (min.): 25 cycles

ELECTRICAL

Voltage (max.): 50V
Current (max.): 0.2A
Contact Resistance: 100 milliohms max.
Dielectric Withstanding Voltage: 250V AC
Insulation Resistance: 50 Megohm min.

PHYSICAL

Housing: LCP, Black
Actuator: Polyamide, Gray
Contact: Copper Alloy
Plating: Gold
Contact Area — Gold
Solder Tail Area — Gold
Underplating — Tin
Operating Temperature:
504754-**00 and -**20: -40 to +105°C
504754-**40 and -**60: -40 to +125°C

Ordering Information

Order No.	Circuit Size	Terminal Locking Feature	Temperature Range
504754-**00	7,9,11,15,21,25,31, 33,35,37,39,41,51,61	Yes	-40 to +105°C
504754-**20		No	
504754-**40		Yes	-40 to +125°C
504754-**60		No	

Replace ** with circuit size