

Woodhead® Industrial-Duty Pin and Sleeve Devices

molex®

Safety, Reliability, Performance: Woodhead® sets the standard when it comes to harsh environment connections

Features and Benefits

Dead-front construction protects users from electric shock

Double screw terminals resist vibration eliminating loose connections

Constant contact surface pressure maintained by a nickel-plated steel spring ensures electrical continuity and grounding

Latching mechanism prevents accidental disengagement

Keyway delivers fast, accurate alignment

Internal strain relief with "swing away" feature

External strain relief greatly reduces the cable bending arc

Terminals accept conductors one or two sizes smaller or larger than normal for added versatility

"Onion ring" neoprene bushing accommodates a wide range of cable sizes

Flexible conduit connectability on cord-ends for added wire protection

IEC Standards*: 60309-1 and 60309-2

*IEC 60309-1 and 60309-2 are a worldwide pin and sleeve standard established by the International Electrotechnical Commission. It meets requirements of Section 410-56(g) of the National Electrical Code

Watertite®

IP67 Rated

20, 30, 60 and 100A Current Rating

Solid Brass Nickel-Plated Contacts

Catalog Page: D61

Safeway®

IP44 Rated

20, 30 and 60A Current Rating

Solid Brass Contacts

Catalog Page: D120



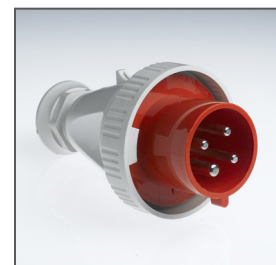
Safeway® plug



Safeway® connector



Watertite® Right Angle Receptacle



Watertite® Plug

www.molex.com/link/watertitewetlocation.html
www.molex.com/product/hdindwiringdevice.html