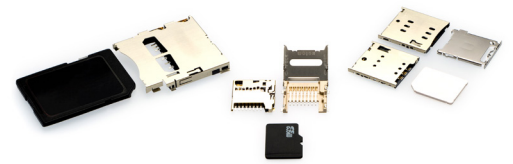


# Memory Card Sockets



Optimized for reliability and high-speed data transfer, Molex's compact, easy-to-use Memory Card Sockets in different configurations meet the quick and compact connection requirements of various industries



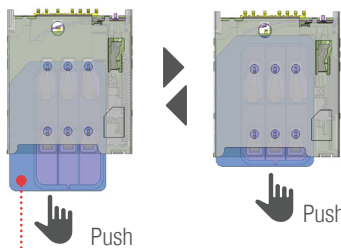
Card sockets

## Features and Advantages

### PUSH-PUSH TYPE

#### User-friendly push-push card ejection

Anyone can use it easily by pushing the card to insert and withdraw it



#### Reliable detect switch

Assures card detection

#### Anti card fly-out ramp and alignment guides

Controls card ejection forces and enables smooth card insertion and extraction

#### Card polarization feature

Unique socket design prevents improper card insertion

#### Inner housing rib wall

Protects terminal tips during card insertion

#### Low-profile design

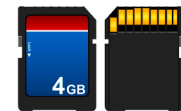
Offers space savings for mobile and other tight packaging applications

#### Slope-shaped terminal

Prevents terminal damage when card is inserted and extracted



micro SD



SD



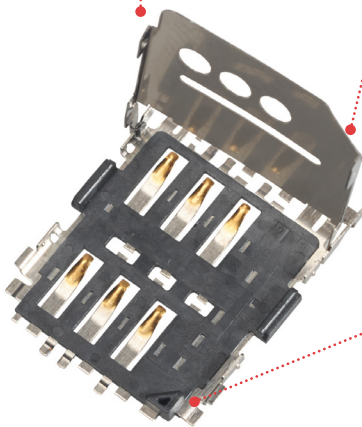
SIM / micro SIM / Nano SIM

### PUSH-PULL TYPE

### HINGE TYPE

#### Durable locking system

Withstands high vibration, making it ideal for harsh-environment applications

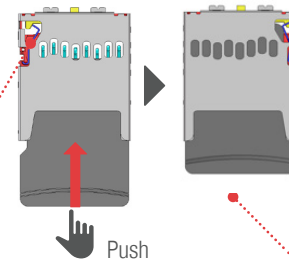


#### Hinge type ejection design

Saves PCB space and offers design flexibility for tight packaging applications

#### Tight coplanarity control

Affords high reliability for reflow soldering



#### Simple design without eject mechanism

Is lower in height than push-push ejection typesoldering

#### Card polarization feature

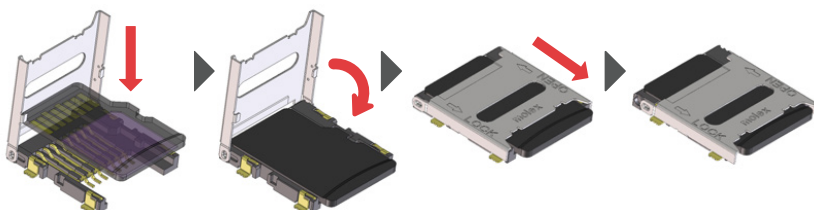
Has a unique socket design that prevents improper card insertion

#### Reliable detect switch

Assures card detection

#### Compact size and low-profile height

Optimizes PCB real estate and offers vertical space savings



Open the socket lid. Place the card into the socket  
 Close the socket lid.  
 Slid the socket lid forward to lock safely

# Memory Card Sockets



## Markets and Applications

### Smart Phones /Mobile devices

- Mobile devices
- POS terminals
- Tablet PCs

### Automotive

- Car infotainment systems
- Drive recorders

### Industrial

- Drones
- Security systems
- Smart meters

### Commercial and Consumer

- IoT applications
- Home appliances
- Set-top boxes



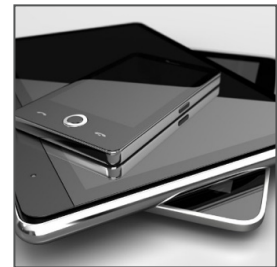
UAVs



Car Infotainment



POS Terminal



Mobile Devices

## Specifications

### REFERENCE INFORMATION

Packaging: Embossed Tape and Reel  
 Use With: SD, microSD, mini-SIM and micro-SIM cards  
 Designed In: Millimeters  
 RoHS: Yes  
 Halogen Free: Low-Halogen

### ELECTRICAL

Current (max.): 0.5A  
 Contact Resistance (max.): 100 milliohms  
 Dielectric Strength: 500V AC (rms)

### PHYSICAL

Housing: LCP, UL 94V-0  
 Contact: Copper Alloy, Phosphor Bronze  
 Shell : Stainless Steel  
 Contact Plating: Gold over Nickel

### MECHANICAL PERFORMANCE

Material No	Durability (Mate / Unmate)	Heat Resistance	Cold Resistance	Thermal Shock	Vibration	Mechanical Shock	
473882001	5,000	85°C x 96hr	-40°C x 96hr	-40 to 85°C x 0.5hr / 25cycle	10-50-10Hz	50G x 11ms	
475530001	10,000			-55 to 85°C x 0.5hr / 25cycle			
476030001	5,000			-40 to 85°C x 0.5hr / 5cycle			10-200-500Hz
788000001		-	10-100-500Hz				
787270001	500	85°C x 120hr	-	-	10-2,000Hz		
5039600696	2,000	85°C x 96hr	-25°C x 96hr	-55 to 85°C x 0.5hr / 5cycle	10-55-10Hz		
5009980900	10,000		-40°C x 96hr		10-2,000Hz		
5035000993			-25°C x 96hr		10-55-10Hz		
472192001			5,000		-40°C x 96hr		10-2,000Hz
5009010801	1,000		-25°C x 96hr		-55 to 85°C x 0.5hr / 25cycle		10-55-10Hz
1040310811	10,000		-40°C x 96hr				
473521001	5,000	-25°C x 96hr					
5025700893	10,000	85°C x 96hr	-40°C x 96hr	-55 to 85°C x 0.5hr / 5cycle	10-55-10Hz		
5027020891			-25°C x 96hr				
5027740891			-40°C x 96hr				
5031821852			-25°C x 96hr				
5033981892			-40°C x 96hr				
5033981892			-25°C x 96hr				

# Memory Card Sockets



## Ordering Information

Material No.	Card Type	Ejection Mechanism	Height (mm)	Width (mm)	Length (mm)	Detect Switch
<a href="#">473882001</a>	SIM	Hinge	1.90	18.00	25.52	No
<a href="#">475530001</a>		Push-Push	1.83	19.35	26.50	Yes
<a href="#">476030001</a>			1.90	19.35	26.30	Yes
<a href="#">788000001</a>	microSIM	Hinge	1.50	13.85	16.96	No
<a href="#">787270001</a>		Push-Pull	1.40	14.53	15.07	Yes
<a href="#">5039600696</a>		Push-Push	1.42	15.50	15.70	Yes
<a href="#">5009980900</a>	SD	Push-Push	3.10	27.90	30.05	Yes
<a href="#">5035000993</a>			2.95	27.40	21.56	No
<a href="#">472192001</a>	microSD	Hinge	1.90	13.60	14.50	No
<a href="#">5009010801</a>			1.93	13.60	14.50	No
<a href="#">1040310811</a>		Push-Pull	1.42	11.95	11.40	Yes
<a href="#">473521001</a>		Push-Push	1.88	14.00	15.20	Yes
<a href="#">5025700893</a>			1.80	13.80	15.50	Yes
<a href="#">5027020891</a>			1.53	14.20	15.70	Yes
<a href="#">5027740891</a>			1.80	14.30	16.00	Yes
<a href="#">5031821852</a>			1.45	14.14	14.95	Yes
<a href="#">5033981892</a>			1.28	13.10	14.05	Yes

[www.molex.com/product/memory.html](http://www.molex.com/product/memory.html)

Molex is a registered trademark of Molex, LLC in the United States of America and may be registered in other countries; all other trademarks listed herein belong to their respective owners.