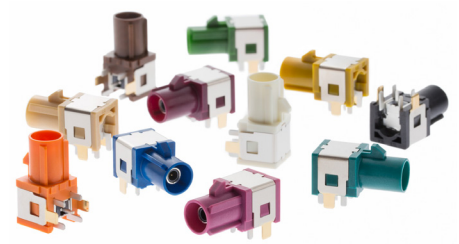


FAKRA Stamped-Body Connectors



FAKRA Stamped-Body Connectors feature an automated mounting capability and a light-weight design that is suitable for a wide variety of automotive applications, and their mechanical keying and color-coding aspects ensure a proper connection in every application



FAKRA Stamped-Body Connectors

Features and Advantages

Center of gravity enabling automatic mounting
Provides easy operation and time savings

Vertical and right-angle configurations
Affords design flexibility

Stamped-body design
Offers lower weight than die-cast versions

Meets USCAR 17 specifications
Provides compliance with automotive telematics application requirements



FAKRA Stamped-Body Connectors

Frequency up to 6 GHz
Makes these connectors ideal for wireless and GPS applications

Mates with original FAKRA PCB jacks and plugs
Provides backward compatibility to existing components to minimize additional costs

Fakra Right Angle Connectors

Fakra Vertical Connectors

Color coded and keyed shrouds
Prevents mis-mating and helps guide proper connections

Markets and Applications

Automotive

- GPS Antennas
- AM/FM radio
- Engine management system
- Infotainment
- Safety and driver assist
- Heating systems
- Navigation systems



Infotainment



Engine Management System



GPS Navigation System

FAKRA Stamped-Body Connectors **molex**

Specifications

REFERENCE INFORMATION

Packaging:
 Right angle: Emboss tape and reel
 Vertical: Tray
 Mates With: FAKRA plug
 Designed In: Millimeters
 RoHS: Yes
 Halogen Free: Yes
 Glow Wire Compliant: No

MECHANICAL

Retention Force with Latch Engaged (min.): 110N
 Mating Force (max.): 25N
 Unmating Force With Lock (min.): 110N
 Unmating Force Without Lock (max.): 25N
 Durability (min.): 50 cycles

ELECTRICAL

Voltage (max.): 60V
 Current (max.): 1.0A
 Impedance: 50 Ohms
 Contact Resistance (max.):
 Center Contact – 40 milliohms
 Outer Contact – 40 milliohms
 Dielectric Withstanding Voltage: 800V AC
 Insulation Resistance (min.): 1,000 Megohms
 Frequency (max.): 6.0 GHz
 VSWR (max.):
 0 to 2 GHz – 1.40
 2 to 3 GHz – 1.50
 3 to 6 GHz – 1.60

PHYSICAL

Center Contact: Brass
 Insulator: LCP Glass-Filled
 Outer Contact: Phosphor Bronze
 Plating:
 Center Contact, Contact Area — Gold
 Outer Contact, Contact Area – Nickel
 Center Contact, Solder Tail Area – Tin
 Nail Plate, Solder Tail Area – Gold
 Underplating – Nickel
 PCB Thickness: 1.60mm
 Operating Temperature: -40 to +105°C

Ordering Information

Series No.	Description	Orientation	Keys Availability
201126-00XX	FAKRA Jack	Right Angle	Refer to chart below
201126-01XX		Vertical	

Last two digit 'XX' means key differentiation

Last two digits	Key	Color	Right Angle	Vertical
01	A	Black	Yes	Yes
02	B	Cream White	Yes	Yes
03	C	Blue	Yes	Yes
04	D	Bordeaux Violet	Yes	Yes
05	E	Green	Yes	Yes
06	F	Brown	Yes	Yes
N/A	G	Gray	Not Available	

Last two digits	Key	Color	Right Angle	Vertical
08	H	Violet	Yes	Yes
09	I	Beige	Yes	Yes
10	K	Curry Yellow	Yes	Yes
11	Z	Water Blue	Yes	Yes
12	L	Carmine Red	Yes	N/A
13	M	Pastel Orange	Yes	Yes
N/A	N	Pastel Green	Not Available	

www.molex.com/link/fakra.html

Molex is a registered trademark of Molex, LLC in the United States of America and may be registered in other countries; all other trademarks listed herein belong to their respective owners.