

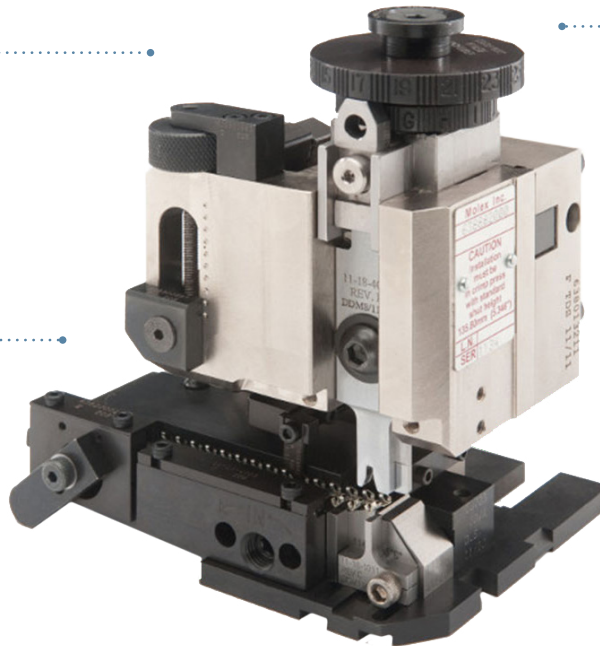
Mini-Fit Jr. Double Crimp Tools >

Mini-Fit Jr. Double Crimp Tools allow for cost savings and quick set-up time. The Molex Fine Adjust Applicator, for Mini-Fit Double Crimp applications, allows for significant time savings as it does not require removal from the press in order to make height, track or feed adjustments.

FEATURES AND ADVANTAGES

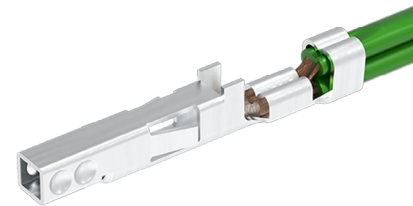
Quick punch removal with the push of a button
 Allows for fast and easy tooling change

Fine adjustment option
 Gives users the ability to achieve target with little effort by adjusting in increments of 0.15mm (.0006") for conductor crimp height and 0.063mm (.0025") for insulation height



Applicator designed with mounting and shut height of 135.80mm (5.35")
 Meets the industry standard

Independent adjustment rings
 Allow users to quickly adjust the conductor or insulation crimp heights without affecting each other



MARKETS AND APPLICATIONS

Automotive

Harness manufacturers
 Non-sealed applications
 Inside devices

Commercial Vehicle

Electronic control modules

Consumer

Gaming equipment
 Gaming machines
 Vending machines

Data/Computing

Copiers
 Printers

Home Appliance

White goods

Industrial/Industrial Automation

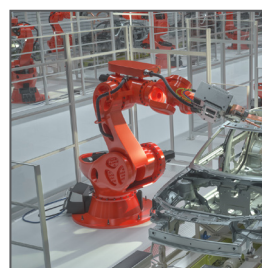
Automation equipment
 Food and beverage dispensers
 Medical
 Medical devices
 X-rays machines

Telecommunications/Networking

Routers and switches
 Servers
 Backplanes
 Fan-tray assemblies
 Rack-mount servers



White Goods



Robotic Arm



Robotic Floor Vacuum

Mini-Fit Jr. Double Crimp Tools >

SPECIFICATIONS

REFERENCE INFORMATION

Use With: Mini-Fit and Mini-Fit Plus Terminals
 Fine Adjust Applicator: Series: 203702
 Terminal Used: Series: 5556 and 5558
 Designed In: Millimeters

For complete specifications:

Refer to the Application Tooling Specification Document.

Note: Double wire combinations may not pass IPC/WHMA-A-620 insulation crimp.

Tool Qualification Notes

1. Pull force should be measured with no influence from the insulation crimp.
2. Pull force should be measured by pulling single smallest wire AWG only.
3. The above specifications are guidelines for an optimum crimp.

ORDERING INFORMATION

Products: Mini-Fit Jr. Double Crimp Terminals 20+22 AWG, 20+20 AWG and 18+22 AWG

Use with: Series 5556 and 5558

Terminal Series No.	Terminal Order No.			Wire					Strip Length	
				UL Type	Combinations	AWG	Insulation Diameter (per wire)		mm	In.
							mm	In.		
5556	39-00-0077	39-00-0079	39-00-0089	1007	20+22 AWG	20	1.70 to 1.80	0.067 to 0.071	3.00 to 3.50	0.118 to 0.138
	39-00-0093	39-00-0112	39-00-0118		22	1.57 to 1.65	0.061 to 0.065			
	39-00-0141	39-00-0157	39-00-0167	1061	20+22 AWG	20	1.42 to 1.45	0.055 to 0.057		
	39-00-0173	39-00-0179	39-00-0185		22	1.22 to 1.27	0.048 to 0.050			
	39-00-0198	39-00-0204	39-00-0211	1007	20+20 AWG	20	1.70 to 1.80	0.067 to 0.071		
	39-00-0217	39-00-0447	-	1061	20+20 AWG	20	1.42 to 1.45	0.055 to 0.057		
5558	39-00-0081	39-00-0083	39-00-0095	1007	18+22 AWG	18	2.01 to 2.03	0.079 to 0.080		
	39-00-0099	39-00-0124	39-00-0130		22	1.57 to 1.65	0.061 to 0.065			
	39-00-0147	39-00-0223	39-00-0449	1061	18+22 AWG	18	1.68 to 1.70	0.066 to 0.067		
	98-00-0176	40-01-0855	-		22	1.22 to 1.27	0.048 to 0.050			
Description										
203702	Fine Adjust Applicator for Mini-Fit Double Crimp Applications									
*Wires should be presented vertically. Double wire combinations may not pass IPC/WHMA-A-620 insulation crimp.										

Mini-Fit Jr. Double Crimp Tools >

ORDERING INFORMATION

Products: Mini-Fit Jr. Double Crimp Terminals 22+22 AWG

Use with: Series 5556 and 5558

Terminal Series No.	Terminal Order No.			Wire					Strip Length	
				Combinations	AWG	UL Type	Insulation Diameter (per wire)			
							mm	In.	mm	In.
5556	39-00-0038	39-00-0055	39-00-0059	22+22 AWG	22	1007	1.57 to 1.65	0.061 to 0.065	3.00 to 3.50	0.118 to 0.138
	39-00-0073	39-00-0108	39-00-0114							
	39-00-0153	39-00-0163	39-00-0169							
	39-00-0175	39-00-0181	39-00-0194							
	39-00-0200	39-00-0207	39-00-0213							
	39-00-0405	39-00-4207	39-00-0410							
	39-00-0419	39-00-0425	39-00-0428							
	39-00-0436	39-00-0440	40-13-0851							
5558	39-00-0040	39-00-0053	39-00-0061	22+22 AWG	22	1061	1.22 to 1.27	0.048 to 0.050	3.00 to 3.50	0.118 to 0.138
	39-00-0075	39-00-0120	39-00-0121							
	39-00-0120	39-00-0121	39-00-0126							
	39-00-0219	39-00-0411	39-00-0420							
	39-00-0426	39-00-0427	39-00-0120							
	39-00-0437	40-01-0853	40-13-0853							
	98-00-0174	-	-							
Description										
203702	Fine Adjust Applicator for Mini-Fit Double Crimp Applications									

*Wires should be presented vertically. Double wire combinations may not pass IPC/WHMA-A-620 insulation crimp.

www.molex.com/link/minifit.html