

Micro-Fit+ Versa Connectors >

Micro-Fit+ Versa Connectors provide a 3.00mm pitch for space-constrained applications and offer a variety of design options, including polarization and four colors with different keying per color to avoid mis-mating, and help ensure operational safety and efficient assembly.

ADVANTAGES AND FEATURES

Offers reduced weight and space savings

Withstands high-vibration environments

Helps ensure operational safety and ease of connector mating in harnesses with multiple connectors at the same location

Four new color-keyed options added to the existing black color, offering a total of 5 different polarizations

Allows for ease of work, reducing operator fatigue during assembly with its unique design compared to standard Micro-Fit 3.0

Reduced mating force by 40%

Current (max.)	13.0A
Pitch	3.00mm
Operating temperatures	-40 to 105°C
Voltage (max.)	600V

Improves strength and reliability

Through-hole technology (THT) headers, plug and receptacle

Offers easier identification and increased safety

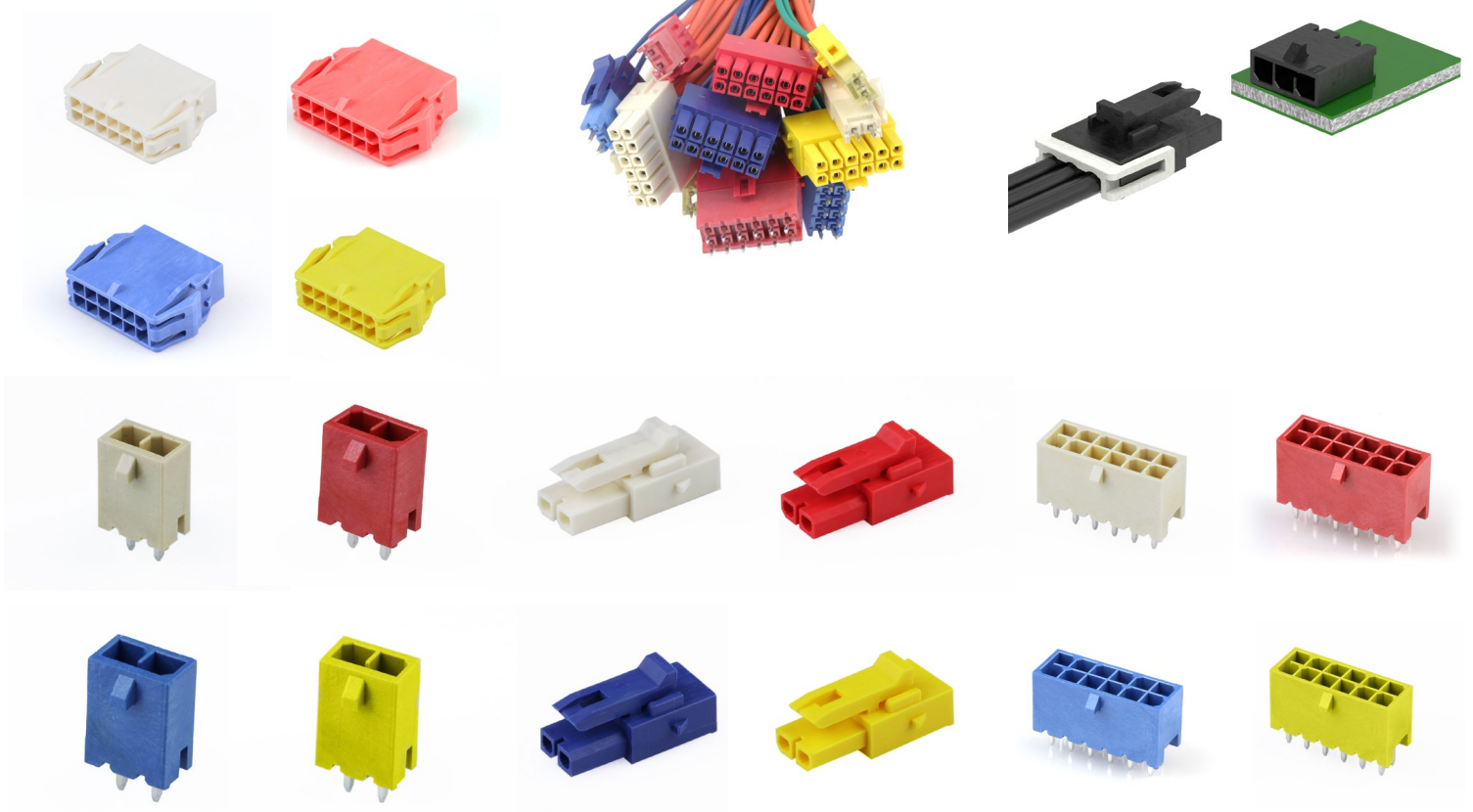
Unique keying design

Meets the required EU regulations for the home appliance market

Glow Wire capable

Provides stability and security for the terminals inside the receptacle; ensures fully seated terminals, optional use

Enhanced TPA design



Micro-Fit+ Versa Connectors >

APPLICATIONS

Automotive

Telemetrics
Non-critical applications

Medical

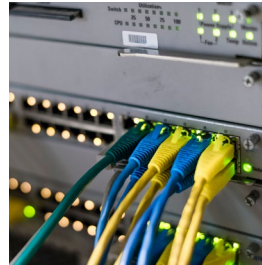
Diagnostic equipment
Patient monitors

Telecommunications/ Networking

Routers and switches
Servers
Storage equipment

Consumer

Washers
Dryers
Ranges
Ovens
Stovetops
Dishwashers
Microwaves
Small appliances
Copiers
Freezers
3D printers
Refrigerators
Vacuum cleaners



Routers



Home Appliances



Patient Monitors

SPECIFICATIONS

Reference Information

Packaging: Bag, tray, reel
UL File No.: E29179
CSA File No.: LR19980
Mates With:
Series: [206832](#) Series: [206461](#)
Use With:
Series: [206460](#) Series: [206461](#)
Series: [206461](#) Series: [206462](#)
Terminal Used:
Series: [206460](#)
Designed In: Millimeters
RoHS: Yes
Halogen Free: Yes
Glow Wire Capable: Yes

Mechanical

Pitch: 3.00mm
Contact Insertion Force: 14.7N (3.3 lbf)
Maximum insertion force
Contact Retention to Housing: 24.5N (5.5 lbf)
Insertion Force to PCB: 13.7N (3.1 lbf)
Minimum retention force
Mating Force (max.):
7.0N per circuit Tin (Sn)
1.0N per circuit Gold (Au)
Unmating Force (min.):
1.4N per circuit Tin (Sn)
0.2N per circuit Gold (Au)

Electrical

Voltage (max.): 600V AC (RMS) or DC
Current (max.): 13.0A
Contact Resistance: 10 milliohms maximum
Dielectric Withstanding Voltage: No breakdown;
current leakage < 5mA
Insulation Resistance: 1000 megohms minimum

Physical

4 colors: Natural, red, blue, yellow
Circuit sizes: 2 to 8 single row
2 to 12 dual row
Housing: Glass filled liquid crystal polymer
Contact: High Copper Alloy
Plating: Gold (Au) or Tin (Sn) over Nickel overall
PCB Thickness: Standard 1.57mm
Operating Temperature: -40 to +105°C

www.molex.com