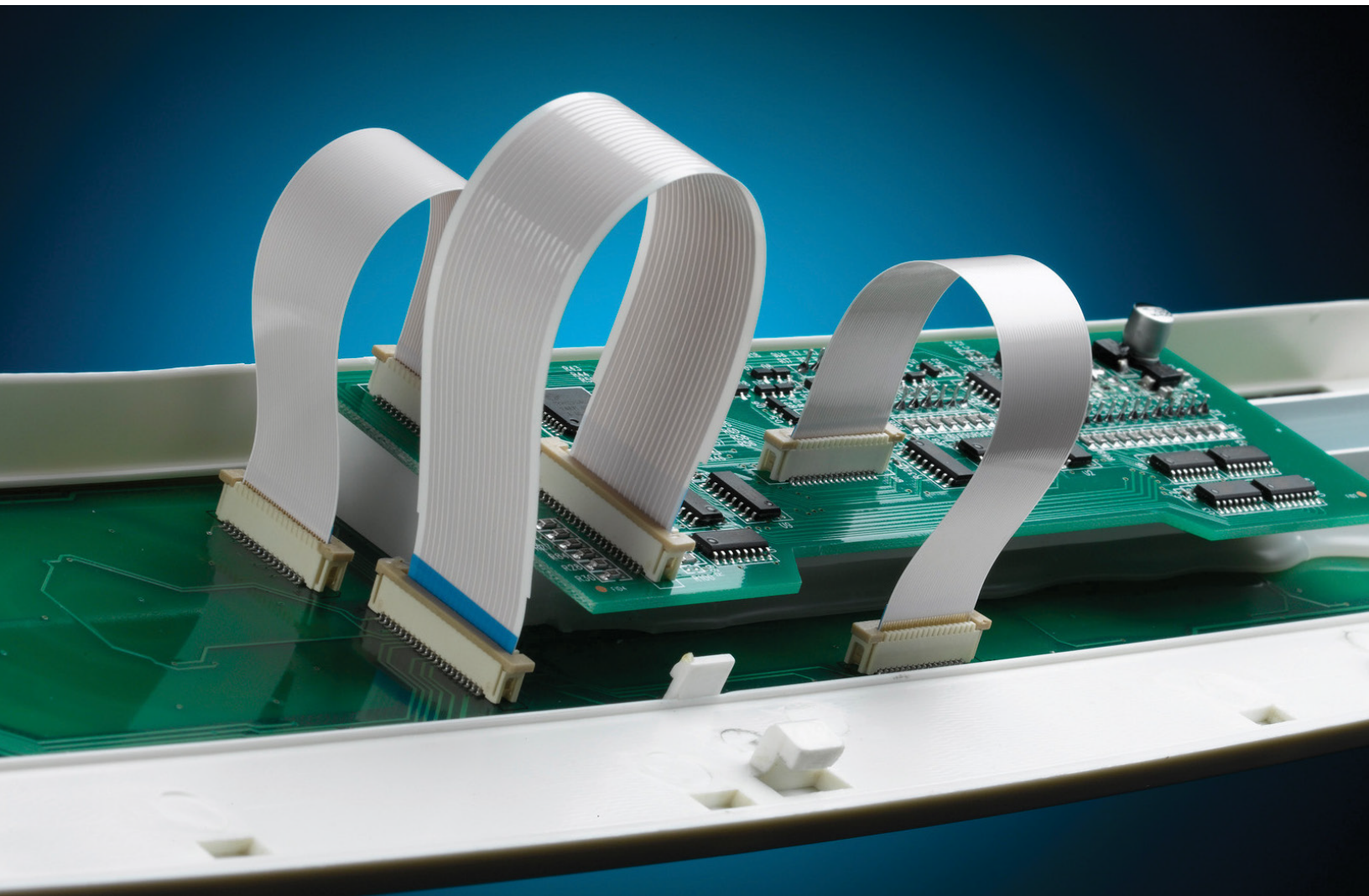


PREMO-FLEX

FLAT FLEXIBLE CABLES (FFC)



Premo-Flex Standard Solutions

Features and Advantages

Design Flexibility

4 to 80 Circuit Sizes

Extended Flex Cycles

10K to 2.5M

Simple Assembly

Why Molex?

One-Stop Source for All Interconnect Solutions

Customer-First Approach

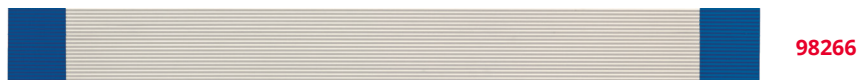
Low Program Requirements

Same-Day Technical Support

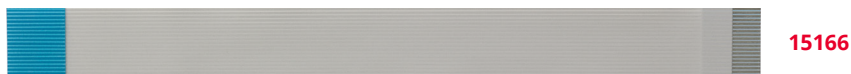
| FLEXIBLE | | | | |
|---|-------------|----------------------|--------------|----------------------|
| FEATURES | TIN PLATING | | GOLD PLATING | |
| 50K Flex Life Cycles 0.27mm Insulated Thickness -40 to +105°C | SERIES | 15266 0.50mm Pitch | SERIES | 15020 0.50mm Pitch |
| | | 15267 1.00mm Pitch | | 15039 1.00mm Pitch |
| | | 15268 1.25mm Pitch | | 15049 1.25mm Pitch |



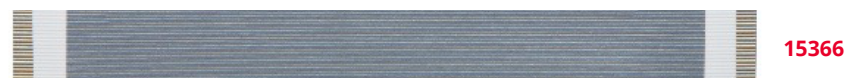
| EXTRA-FLEXIBLE | | |
|--|----------------------|--|
| FEATURES | TIN PLATING | |
| 100K Flex Life Cycles 0.22mm Insulated Thickness -40 to +105°C | 98266 0.50mm Pitch | |
| | 98267 1.00mm Pitch | |
| | 98268 1.25mm Pitch | |



| ULTRA-FLEXIBLE | | | | |
|--|-------------|----------------------|--------------|----------------------|
| FEATURES | TIN PLATING | | GOLD PLATING | |
| 2.5M Flex Life Cycles 0.12mm Insulated Thickness -40 to +105°C | SERIES | 15166 0.50mm Pitch | SERIES | 15120 0.50mm Pitch |
| | | 15167 1.00mm Pitch | | |
| | | 15168 1.25mm Pitch | | |



| ELECTROMAGNETIC INTERFERENCE (EMI) PROTECTION | | |
|---|-------------|----------------------|
| FEATURES | TIN PLATING | |
| First and Last Pin Grounded -40 to +105°C | SERIES | 15366 0.50mm Pitch |

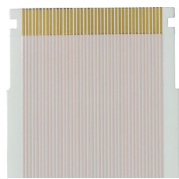


Premo-Flex Standard Solutions

| MINIATURIZATION | | |
|--|--------------|--|
| FEATURES | GOLD PLATING | |
| 0.12mm Insulated Thickness 10K+ Flex Life Cycles -40 to +105°C Staggered Pins | SERIES | 15014 0.25mm Pitch 15015 0.30mm Pitch 15031 0.30mm Pitch (notched) 15032 0.30mm Pitch (latching ears) |



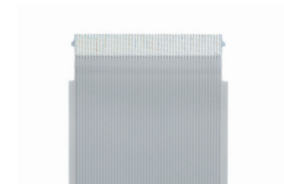
| SUPERIOR RETENTION | | |
|---|-------------|--|
| FEATURES | TIN PLATING | GOLD PLATING |
| Notched or Latching Ears -40 to +105°C | SERIES | 15016 0.50mm Pitch (notched) 15018 0.50mm Pitch (latching ears) 15019 1.00mm Pitch (latching ears) 15025 0.40mm Pitch (latching ears) 15031 0.30mm Pitch (notched) 15032 0.30mm Pitch (latching ears) |



15016



15018



15466

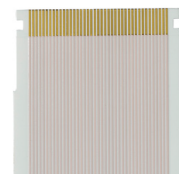
| HIGH SPEED | | |
|---|--------------|---|
| FEATURES | GOLD PLATING | DATA SPEED |
| 100 Ohms Controlled Impedance 0.50mm Pitch -40 to +80°C | SERIES | 15021 LVDS Straight (termination) 15022 LVDS (notched) 15023 LVDS (notched) 15026 LVDS One-Touch |
| | | 2 to 5 Gbps for 12" to 24" 5 to 10 Gbps for 2" to 10" |



15021



15022



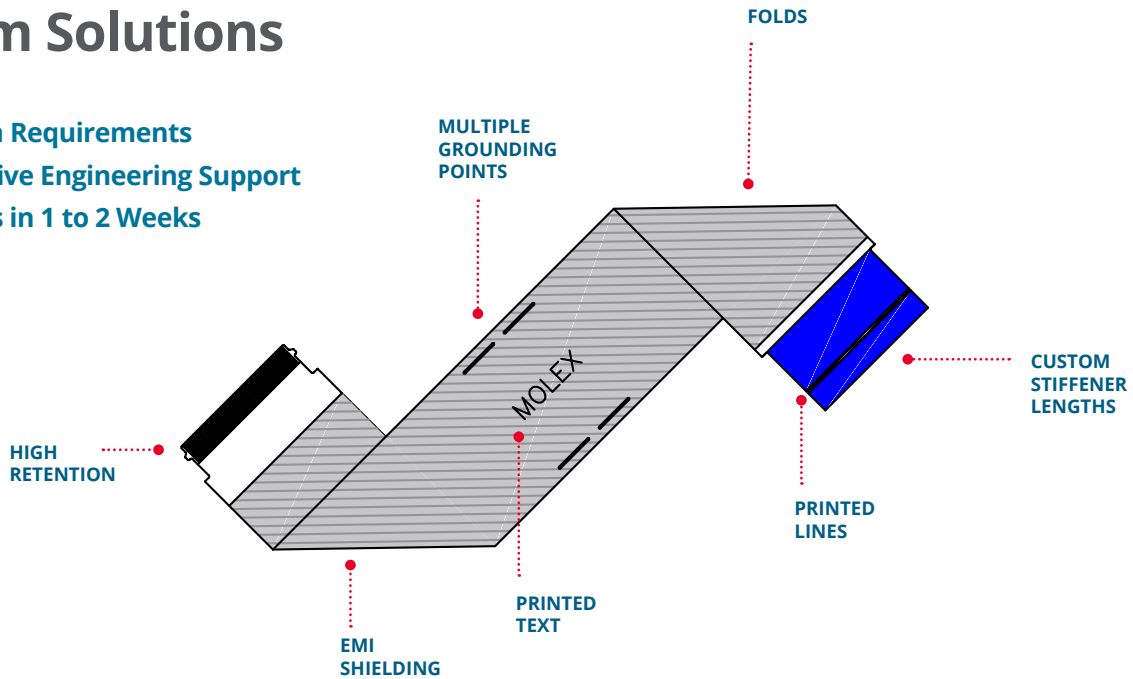
15023



15026

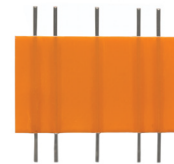
Custom Solutions

Low Program Requirements
 Comprehensive Engineering Support
 Free Samples in 1 to 2 Weeks



Additional Offerings

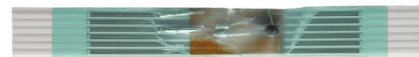
Round Flat Cables (RFCs) provide ideal electrical connections between PCBs and create cost savings by eliminating the need for connectors.



Hybrid Solutions have round contacts at one end for through-hole soldering and flat contacts at the other.



Component Soldering attaches thermistors and resistors directly to cable with optional protective cover film.



Finished Assemblies combine Premo-Flex FFC Jumpers with Easy-On FFC FPC to provide complete interconnect solutions.



Hot Bar Soldered Cables provide a durable connection by permanently affixing to a PCB via direct soldering.



Insulated Material (such as polyester, polyimide and Aramid) enable PCB connection solutions for unique temperature and environmental conditions.



Selecting Your Premo-Flex Solution

1 STEP 1

Choose Your Connector

-OR-

Identify

- Pitch
- Circuit Count
- Plating

2 STEP 2

Determine Specifications

- Length
- Flex Life Cycles
- Contact Layout Type
 - A = Same Side Contacts
 - D = Opposite Side Contacts

3 STEP 3

Define Additional Requirements

- Temperature
- Superior Retention
- Speed
- EMI

| Series | Feature | Pitch (mm) | Plating Material | Flex Life Cycles | End Thickness (mm) | Contact Layout Type | Standard Lengths (mm) |
|--------|----------------------------------|------------|------------------|------------------|--------------------|---------------------|-----------------------|
| 15166 | Ultra-Flex | 0.50 | Tin | 2.5M | 0.30 | A and D | 30 to 305 |
| 15167 | | 1.00 | | | | | |
| 15168 | | 1.25 | | | | | |
| 15366 | Shielded | 0.50 | | 1M | | | |
| 98266 | Extra-Flexible | 0.50 | | 100K | | | |
| 98267 | | 1.00 | | | | | |
| 98268 | | 1.25 | | | | | |
| 15266 | Flexible | 0.50 | | 50K | | | |
| 15267 | | 1.00 | | | | | |
| 15268 | | 1.25 | | | | | |
| 15466 | High Retention | 0.50 | | | | | |
| 15018 | High Retention | 0.50 | Gold | | | | |
| 15020 | Flexible | 0.50 | | | | | |
| 15039 | | 1.00 | | | | | |
| 15049 | | 1.25 | | | | | |
| 15016 | High Retention | 0.50 | | 2.5M | | | |
| 15025 | | 0.40 | | | | | |
| 15031 | Miniaturization / High Retention | 0.30 | | 10K+ | 0.20 | A | 51 to 305 |
| 15032 | | 0.30 | | | | | |
| 15015 | Miniaturization | 0.30 | | | | | |
| 15014 | Miniaturization | 0.25 | | | | | |

Low-Voltage Differential Signal (LVDS) Cables

| Series | Notched | Pitch (mm) | Plating Material | Mating Connectors | Temperature | End Thickness (mm) | Contact Layout Type | Standard Lengths (mm) |
|--------|---------|------------|------------------|-------------------|---------------|--------------------|---------------------|-----------------------|
| 15021 | No | 0.50 | Gold | 502231, 502244 | -40 to +80°C | 0.30 | A | 51 to 610 |
| 15022 | Yes | | | 501786, 501864 | | | | |
| 15023 | Yes | | | 503908 | | | | |
| 15026 | Yes | | | 200485 | -40 to +105°C | 0.33 | | |

A Cable Designed for Every Industry



CONSUMER

Cameras, drones, phones, handheld gaming devices, home appliances, TVs

MEDICAL

Handheld ultrasound, infusion pumps, medication dispensers, monitoring systems

DATAKOM

Printers, scanners, keyboards, servers, routers, computers

AUTOMOTIVE

Infotainment, LCD displays, GPS devices

INDUSTRIAL

Robotics, generators, cooling systems

Get customized insights at: molex.com keyword **Premo-Flex**

LOOKING FOR MORE INFO?

Scan for full specification details!

